

# MOBILE PRINTING

**TOSHIBA MANAGED SERVICES**  
*beyond workflow*



## Mobility and Printing - a new dawn

Today's students have ever-increasing access to mobile devices, as Bring Your Own Device schemes and class-issued devices revolutionise education.

TOSHIBA Mobile Print makes it easy for students to connect to a school's printing resources in a seamless, secure and controlled manner. From the occasional print of office documents, to specialised applications on Mac or Linux, TOSHIBA Mobile Print is the only solution you need for campus-wide wireless printing.

- TOSHIBA Mobile Print is a flexible, centrally-administered solution for helping students printing from their own computers or devices.
- TOSHIBA Mobile Print is the perfect fit for schools, libraries, colleges and universities of all sizes, where students or guests need to print from their own laptops or mobile devices.
- If students know how to send an email, navigate to a web address or use a smartphone app, they can print with TOSHIBA Mobile Print.

What's more, any client computer is supported with TOSHIBA Mobile Print on any platform that can use a recent Internet browser, such as Internet Explorer, Firefox, Chrome or Safari, and ANY mobile device that can send an email.

## Scan, capture & print

TOSHIBA Mobile Print takes the guesswork out of connecting to the correct device by helping you to select your most recently used print devices, or locate your printer by scanning a QR code.

- Print a document from your mobile device or cloud storage (Box, Dropbox, Google Drive, SkyDrive).
- Print images stored in photo gallery or captured by the camera.
- Utilise advanced print settings such as number of copies, duplex and colour mode.
- Select Private Print or Hold Print to prevent the printed document from being left on the printer or MFP.
- Scan a document from an MFP and store the document onto your Mobile device or upload it to cloud storage.
- Generate and print a QR code to simplify MFP discovery.
- Use user authentication and department code to maintain a secured office.

## Let students print the way they want

Four simple ways to print, Direct Print, Web Print, Universal Driver Print and Email Print. Mix and match printing functions and authentication methods to meet the specific requirements of your environment.



### Direct Print

Print directly from Android or iOS mobile device.



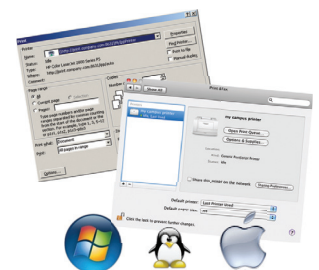
### Email Print

Let students send documents to print as attachments via email, from anywhere, including from their mobile devices.



### Upload via Web

Upload documents using a Web browser in popular formats such as Microsoft Office, OpenOffice or PDF's.



### Universal driver

Just one simple setup, and students can print directly from within the programs they use on their own computers, Windows, Mac or Linux.

Once authorised, students can print from anywhere, both on and off campus and from any network and location. Or you can limit access to just your internal network. **TOSHIBA Mobile Print** does not require an Internet connection, you can keep everything internal if you prefer, making it also the perfect solution for student printing during tests and exams.



Student Lounge



Computer Lab



Dorm Rooms



Off Campus Home

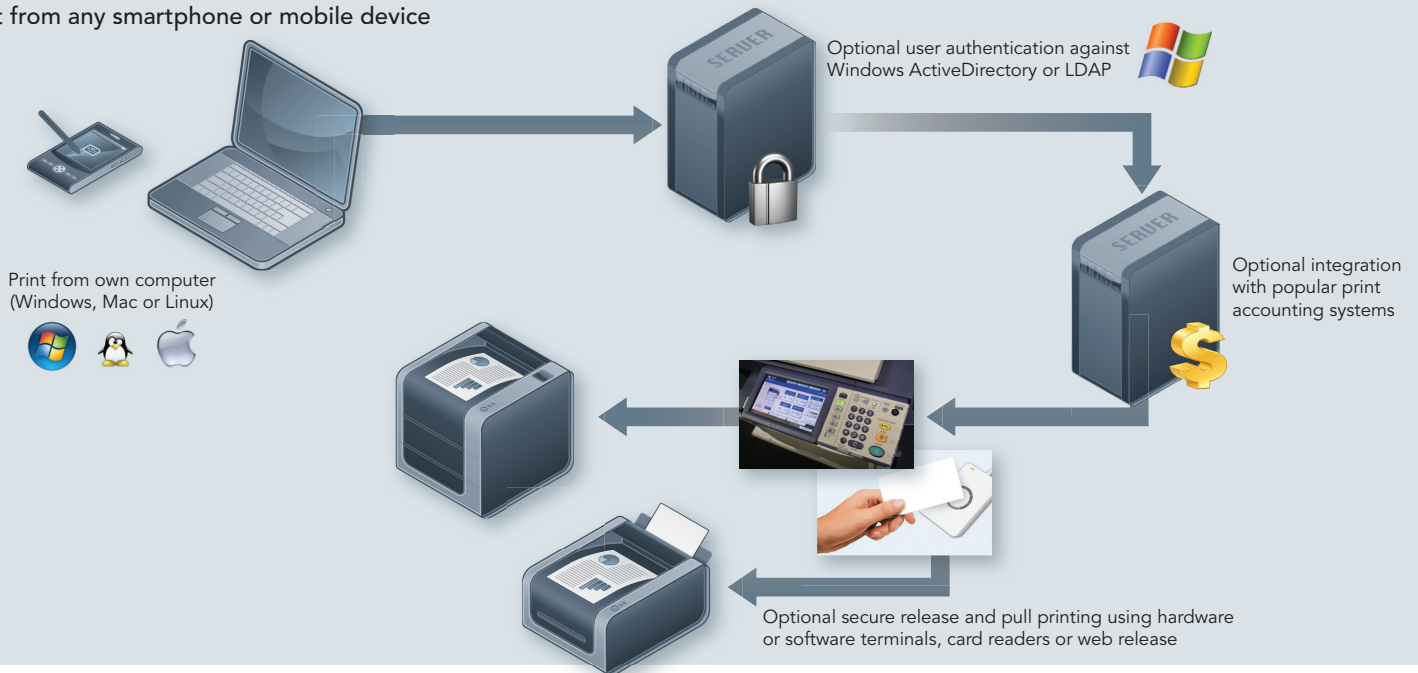


Library



Coffee Shops

Print from any smartphone or mobile device



## TOSHIBA Mobile Print for Education - at a glance

- Sending documents to print is as simple as sending an email, using a Web browser, or using a smartphone app.
- Designed for student self-service, with interfaces and instructions in the students own language, ensuring any student can print immediately - add your own logo to make students feel right at home.
- It's so easy to use, most students won't need the helpdesk, just point them to the Web portal, and that's it.
- Convenient "pull printing" option allows users to release and print at the device of their choice, on demand.
- Greatly reduce IT support costs by not having to install AND uninstall anything from students own computers.
- Secure printing is essential, so TOSHIBA Mobile Print supports strong SSL encryption throughout all interfaces and printing methods (Web, email and Universal Driver Print).
- Works with any printing device with a Windows printer driver.

TOSHIBA Mobile Print is compatible with on the following Microsoft® Windows Server versions; Windows Server 2003, 2003 R2, 2008, 2008 R2, 2012, 2012 R2, either 32 and 64 bit.

TOSHIBA Mobile Print can print to devices from all major manufacturers, covering most lasers, inkjets, and multifunction devices, without any special configuration.

Microsoft and Windows® are registered trademarks of Microsoft Corporation in the United States and/or other countries.  
Adobe® PostScript® Level 3™ is a registered trademark of Adobe Systems, Inc.  
Mac OS® is a registered trademark of Apple Inc.  
All other brand and/or product names are trademarks of their respective owners.  
Design and specifications subject to change without notice.